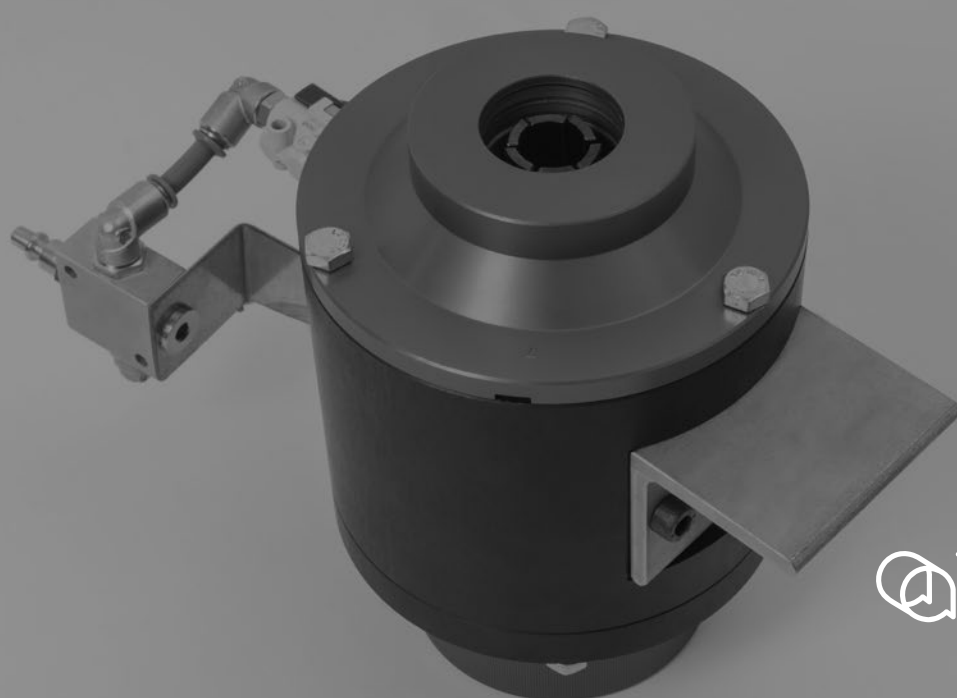


M.E.C.® COATING



azeta gomma
S.p.A.

M.E.C.® COATING

PNEUMATIC DEVICE FOR ROLLERS COATING

The **M.E.C.® COATING** is a pneumatic device suitable for rollers coating.

The machine responds to the requirement to coat conveyor rollers in a simple, quick and safe manner (applications: logistics, ceramics, wood and glass industries).

The **M.E.C.® COATING** makes coating jobs quicker and easier.



What is required to use the M.E.C.® COATING:

- stable surface,
- clamp,
- compressed air (constant 6 bar pressure).



INSTRUCTIONS:

Assemble the machine contained in the case;

SETUP:

1. The case contains the machine's body and a format changeover kit (insertion ring, internal body, external adapter or flange).
2. Place the unit on a stable surface.
3. Screw the insertion ring into the machine's body, then fit the internal body and its flange, and screw down the 3 bolts.
4. Connect the machine to the compressed air and check that it delivers a constant pressure of 6 bar.
5. Place the unit on a stable surface and secure it by clamping the provided pin.
6. To set the internal body, insert the hose (which is to be fit to the roller), actuate the compressed air valve (identified as n. 1), which opens the internal body clamps to position it properly, and repeat until the hose is correctly positioned.

OPERATION:

REMARK: for rollers longer than 1 metre, we recommend that a second operator hold the roller aligned with exit hole during the process.

7. Insert the roller into the back of the machine via the insertion ring, and actuate the air valve (identified as n. 2).
8. When the roller is almost completely inserted, use the pusher to drive it through to the other end, applying force along the axis of the roller itself.

9. Turn off the second compressed air valve (identified as n. 2).
10. When the roller is fully inserted, cut the hose with a cutter or other cutting instrument.
11. Now turn off the first compressed air valve (identified as n. 1) to close the internal body clamps, you can now remove the coated roller from the machine.

REMARK:

We recommend lubricating the roller or damping it with soapy water.

Before you start, make sure that the hose is not damaged or folded back on itself, so that air can flow properly through its entire length.

Make sure not to use hoses that are too old or that have been subjected to freezing.



A Zeta Gomma S.p.A.

Via Radici in Piano 449/1
41049 Sassuolo
Modena , Italy

Tel. +39 0536/867111
Fax. +39 0536/806884 – 806945
info@azetagonma.com
www.azetagonma.com