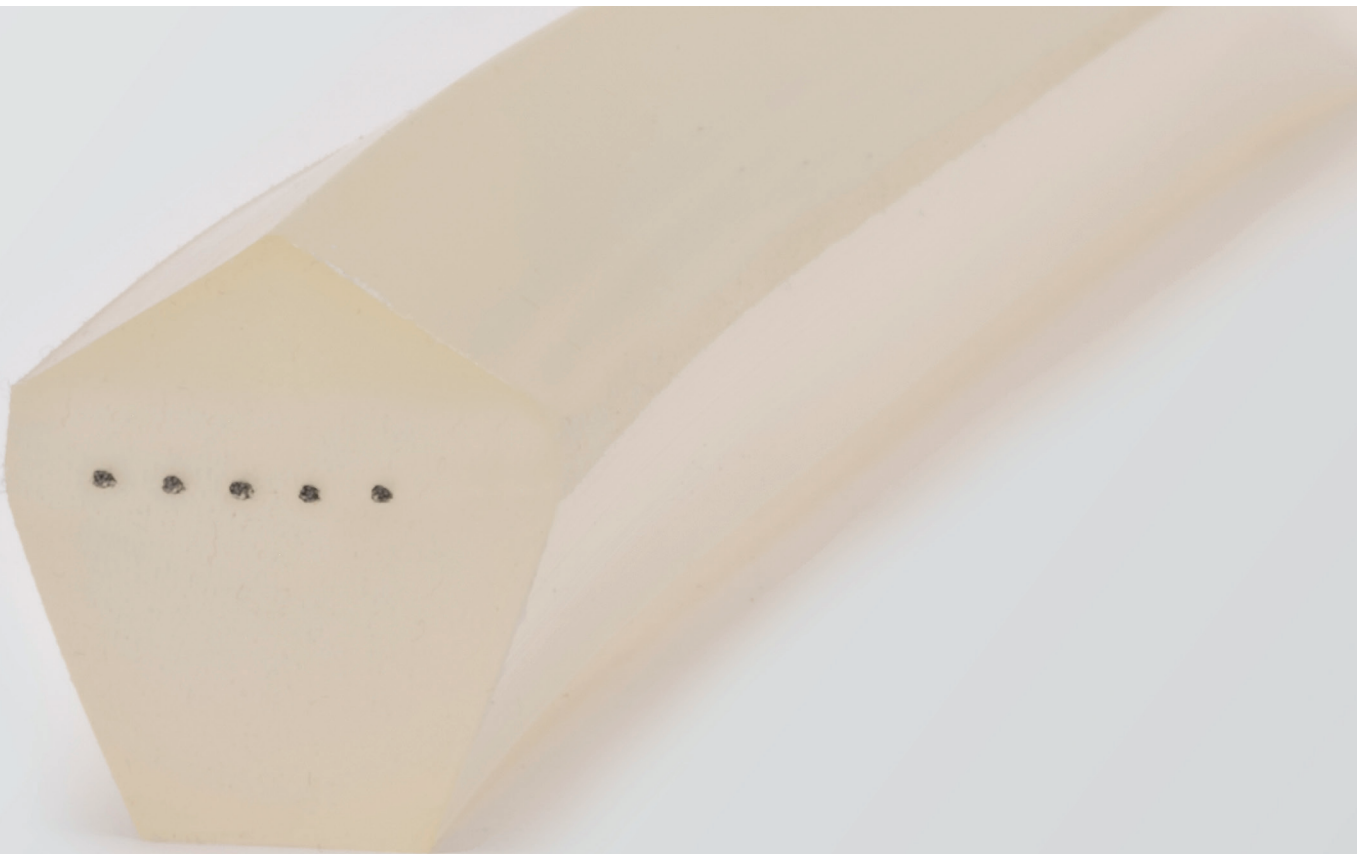




M.E.C.® POLBELT P4.0

M.E.C.® Polbelt – P4.0 is a Thermo-weldable polyurethane belt reinforced with steel cords. Designed to meet the needs of the ceramic industry, it is intended for handling large-format tiles.

It is manufactured at the A-Zeta Gomma facilities in Sassuolo using the most advanced polyurethane profile extrusion technologies, providing the belt with the necessary hardness to transport large slabs and ensuring long-service life.



SASSUOLO

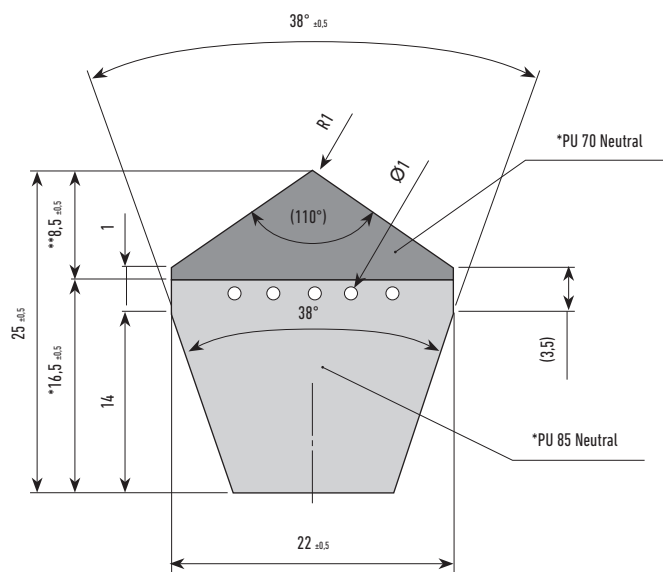
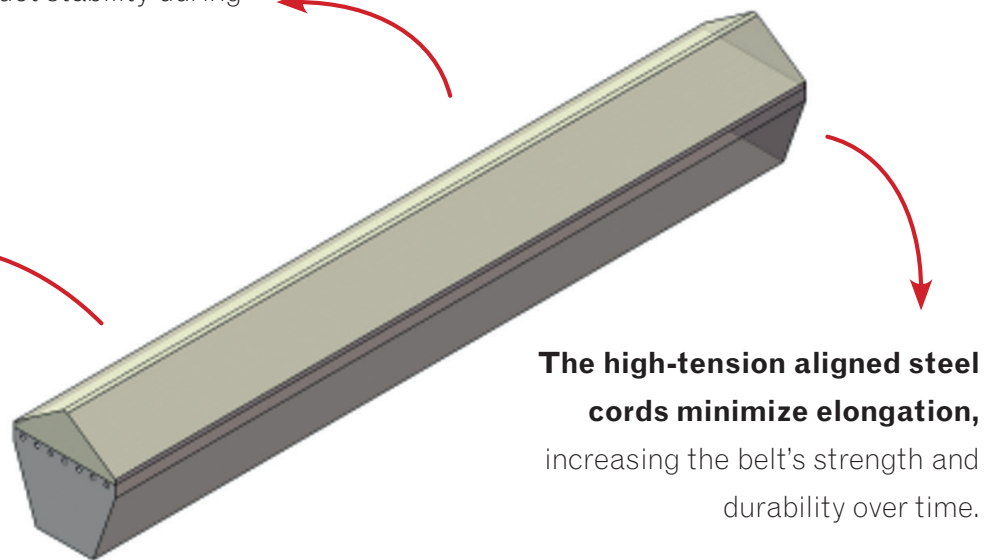
PARTNER UFFICIALE

azeta gomma
S.p.A.

tailor made for you

The soft, elastic polyurethane ridge reduces vibrations and ensures product stability during transport.

The polyurethane base of the belt reduces friction and the energy required for handling.



A MADE IN ITALY PRODUCT FOR THE TRANSPORTATION OF LARGE FORMAT AND SLABS

M.E.C.® Polbelt – P4.0 is an extremely durable belt that can be used to create matching belts sets with identical development. It is available with either M.E.C.® Splicing or M.E.C.® Welder.

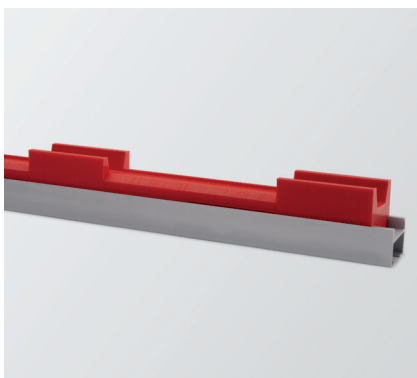
M.E.C.® Splicing

150 mm joint with overlapping cables for greater tensile strength.

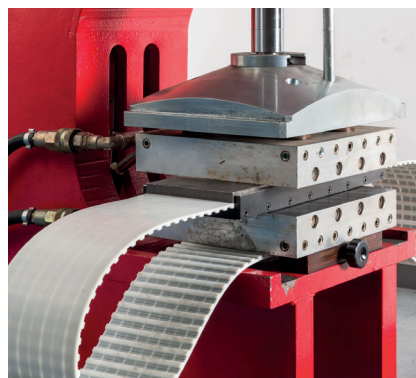
M.E.C.® Welder

Butted joint with higher strength compared to belts with polyester cords.

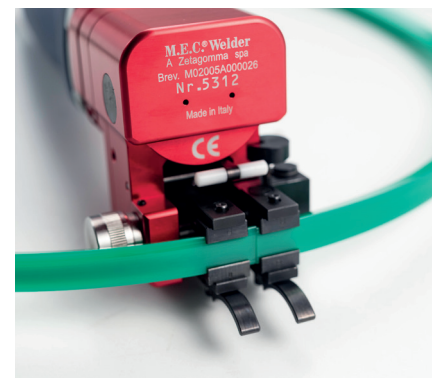
ACCESSORIES



Guides M.E.C.® DRIVE RED Power 9M™



M.E.C.® Splicing



M.E.C.® Welder