

M.E.C. MULTIBELT[®] OIL STAT[®] BELTS

Discount Ref. 08 Group A7

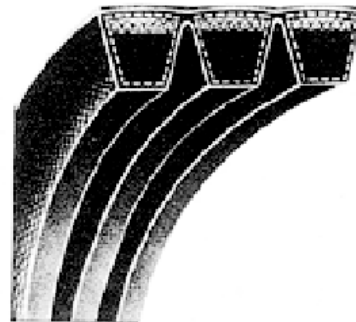
The M.E.C. MULTIBELT[®] belts are made up of M.E.C. V-BELT[®] conventional belts sec. A-B-C and M.E.C. V-BELT[®] narrow section 3, 5, 8V belts according to US standards joined together to form units consisting of 2 to 5 components. Since they are joined together, these belts ensure:

- No tapping noises
- An even load distribution on individual components
- Stability – they do not tip and therefore will not come out of the races.

M.E.C. MULTIBELT[®] belts are for use on grinding and crushing machines, road-building machines, vibrating screens and combine-harvesters.

Recommended minimum external diameters

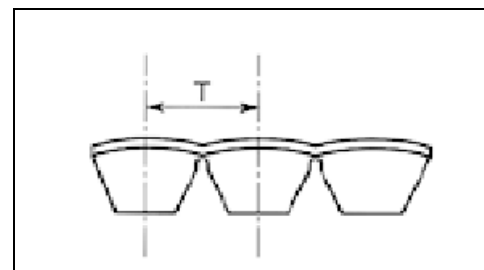
Sections	mm
A	80
B	125
C	200
3V	70
5V	180
8V	315



Section code	Sections	Base	Height
2	A	13	9,9
3	B	17	13
4	C	22	16,1
5	3V	9	9,9
6	5V	15	15,1
7	8V	25	25,5

Minimum supply (varies according to number of components)

Sections	Belts
A	From 14 to 25
B	From 12 to 22
C	From 8 to 12
3V	From 20 to 40
5V	From 12 to 18
8V	From 10 to 14



Sections	T (mm)
A	15.0
B	19.0
C	25.5
3V	10.3
5V	17.5
8V	28.6

M.E.C. MULTIBELT® OIL STAT® BELTS

from 2 to 5 components

SECTION "A" (13 x 9,9 mm)

Type	Rated inside length mm
A 40	1016
A 41	1041
A 42	1067
A 43	1092
A 43 1/2	1105
A 44	1120
A 44 1/2	1132
A 45	1143
A 46	1168
A 47	1200
A 48	1220
A 49	1250
A 50	1270
A 51	1300
A 51 1/2	1307
A 52	1320
A 52 1/2	1337
A 53	1346
A 53 1/4	1355
A 54	1372
A 55	1400
A 56	1422
A 57	1450
A 58	1475
A 59	1500
A 60	1525
A 61	1550
A 62	1575
A 63	1600
A 64	1625
A 65	1650
A 66	1676
A 67	1700
A 68	1725
A 69	1750
A 70	1775
A 71	1800
A 72	1825
A 73	1854
A 74	1880
A 75	1900
A 76	1930

SECTION "A" (13 x 9,9 mm)

Type	Rated inside length mm
A 77	1956
A 78	1980
A 79	2000
A 80	2032
A 81	2060
A 82	2083
A 83	2100
A 84	2134
A 85	2160
A 86	2187
A 87	2212
A 88	2240
A 90	2286
A 91	2311
A 92	2337
A 93	2360
A 94	2388
A 95	2413
A 96	2438
A 97	2464
A 97 1/2	2475
A 98	2500
A 100	2540
A 102	2591
A 104	2650
A 105	2667
A 107	2725
A 108	2743
A 110	2800
A 112	2845
A 113	2870
A 116	2946
A 118	3000
A 120	3048

SECTION "B" (17 x 13 mm)

Type	Rated inside length mm
B 60	1525
B 61	1550
B 62	1575
B 63	1600
B 64	1625
B 64 1/2	1642
B 65	1650
B 66	1676
B 66 1/4	1682
B 66 1/2	1692
B 67	1700
B 67 1/4	1712
B 68	1725
B 69	1750
B 69 1/2	1761
B 70	1775
B 71	1800
B 72	1829
B 73	1850
B 74	1880
B 75	1900
B 76	1930
B 78	1981
B 79	2000
B 80	2032
B 81	2060
B 82	2083
B 83	2108
B 84	2134
B 85	2160
B 86	2187
B 87	2215
B 88	2240
B 89	2261
B 90	2286
B 91	2312
B 92	2337
B 93	2360
B 94	2388
B 95	2413
B 96	2438
B 97	2465

M.E.C. MULTIBELT® OIL STAT® BELTS

from 2 to 5 components

SECTION"B" (17 x 13 mm)

Type	Rated inside length mm
B 97 1/2	2477
B 98	2500
B 99	2515
B 100	2540
B 102	2600
B 103	2616
B 104	2650
B 105	2667
B 106	2700
B 107	2718
B 108	2750
B 110	2800
B 112	2845
B 112 1/2	2857
B 114	2900
B 115	2921
B 116	2950
B 118	3000
B 120	3048
B 124	3150
B 127	3227
B 128	3250
B 130	3302
B 131	3327
B 132	3350
B 133	3378
B 134	3407
B 135	3429
B 136	3450
B 140	3550
B 144	3658
B 147	3737
B 148	3750
B 151	3850
B 152	3891
B 154	3912
B 157	3987
B 158	4000
B 161	4087
B 162	4115
B 163	4142
B 165	4200

SECTION"B" (17 x 13 mm)

Type	Rated inside length mm
B 167	4250
B 168	4267
B 173	4394
B 175	4450
B 177	4500
B 180	4572
B 186	4727
B 188	4777
B 192	4877
B 195	4953
B 197	5000
B 204	5182
B 208	5285
B 210	5334
B 214	5436
B 221	5615
B 223	5664
B 224	5690
B 225	5715
B 226	5792
B 229	5816
B 237	6020
B 240	6096
B 248	6300
B 249	6325
B 253	6425
B 255	6477
B 259	6579
B 265	6730
B 270	6858
B 276	7010
B 280	7112
B 285	7240
B 300	7620
B 315	8000
B 330	8382

SECTION"C" (22 x 16,1 mm)

Type	Rated inside length mm
C 60	1524
C 62 1/2	1583
C 63	1600
C 65	1650
C 68	1727
C 70	1778
C 75	1900
C 80	2032
C 81	2057
C 83	2108
C 85	2159
C 90	2286
C 93	2360
C 95	2413
C 96	2438
C 97	2462
C 97 1/2	2477
C 98	2500
C 99	2525
C 100	2540
C 101	2560
C 102	2591
C 104	2642
C 105	2667
C 106	2692
C 108	2750
C 110	2800
C 112	2845
C 112 1/2	2858
C 115	2921
C 116	2950
C 118	3000
C 120	3048
C 124	3150
C 128	3250
C 130	3302
C 132	3350
C 134	3404
C 136	3456
C 140	3550
C 142	3607
C 144	3658

M.E.C. MULTIBELT® OIL STAT® BELTS

from 2 to 5 components

SECTION "C" (22 x 16,1 mm)

Type	Rated inside length mm
C 147	3733
C 148	3750
C 153	3902
C 158	4000
C 160	4064
C 162	4115
C 165	4193
C 166	4216
C 168	4267
C 170	4318
C 173	4394
C 175	4445
C 177	4500
C 180	4572
C 187	4750
C 193	4900
C 195	4953
C 197	5000
C 204	5182
C 208	5285
C 210	5334
C 212	5384
C 216	5486
C 222	5638
C 225	5715
C 228	5792
C 230	5842
C 238	6045
C 240	6096
C 248	6300
C 250	6350
C 255	6477
C 261	6629
C 265	6730
C 268	6807
C 270	6858
C 276	7010
C 280	7112
C 285	7240
C 297	7544
C 300	7620
C 303	7696
C 314	7975
C 316	8026
C 330	8382
C 336	8535
C 345	8763
C 360	9145
C 394	10008

SECTION "3V" (9 x 9,9 mm)

Type	Rated inside length mm
3V 355	858
3V 375	913
3V 400	973
3V 425	1038
3V 450	1103
3V 475	1163
3V 500	1228
3V 530	1303
3V 560	1378
3V 600	1483
3V 630	1558
3V 670	1658
3V 710	1763
3V 750	1863
3V 800	1988
3V 850	2118
3V 900	2243
3V 950	2373
3V 1000	2498
3V 1060	2648
3V 1120	2803
3V 1180	2953
3V 1250	3133

SECTION "5V" (15 x 15,1 mm)

5V 750	1834
5V 800	1959
5V 850	2089
5V 900	2214
5V 950	2344
5V 1000	2469
5V 1060	2619
5V 1120	2774
5V 1180	2924
5V 1250	3104
5V 1320	3284
5V 1400	3484
5V 1500	3739
5V 1600	3994
5V 1700	4249
5V 1800	4499
5V 1900	4754
5V 2000	5009
5V 2120	5314
5V 2240	5619

SECTION "5V" (15 x 15,1 mm)

Type	Rated inside length mm
5V 2360	5924
5V 2500	6279
5V 2650	6659
5V 2800	7039
5V 3000	7549
5V 3150	7929
5V 3350	8445
5V 3550	8944

SECTION "8V" (25 x 25,5 mm)

8V 1120	2725
8V 1180	2875
8V 1250	3055
8V 1320	3235
8V 1400	3435
8V 1500	3690
8V 1600	3945
8V 1700	4200
8V 1800	4450
8V 1900	4705
8V 2000	4960
8V 2120	5265
8V 2240	5570
8V 2360	5875
8V 2500	6320
8V 2650	6610
8V 2800	6990
8V 3000	7500
8V 3150	7880
8V 3350	8395
8V 3550	8895
8V 3750	9430
8V 4000	10040
8V 4250	10680
8V 4500	11310
8V 4750	11930
8V 5000	12580